

PORTA-GANTRY[®] RAPIDE

1,100 lb (500 kg) Goods
550 lb (250 kg) Personnel

The PORTA-GANTRY RAPIDE adds exciting new dimensions to the PORTA-GANTRY family, as a unique rapid deployment system with Goods and Personnel Lifting (Man-ride) capability.



Provided by **THERN**



Standard Dimensions

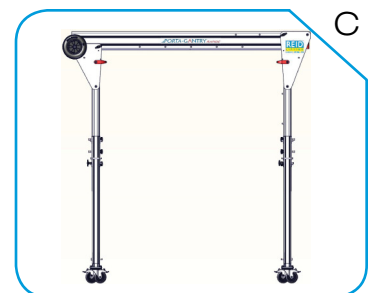
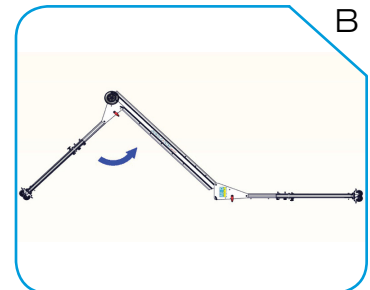
Open:
81.0 x 85.4 x 45.7 in
(2076 x 2189 x 1170 mm)

Folded:
17.2 x 85.5 x 16.2 in
(440 x 2190 x 415 mm)

Height to Lifting Eye:
Master Link Trolley
67.8 - 75.6 in
(1738 - 1938 mm)
Closed Coupled Trolley
72.2 - 80.0 in
(1850 - 2050 mm)

Working Span:
59.1 in
(1500 mm)

Easy Assembly (A-C)



FEATURES

- Dual rated for goods and personnel lifting
 - Goods rated to WLL 1100 lb (500kg)
 - Personnel rated to WLL 550 lb (250kg)
 - Designed to meet and exceed OSHA, ANSI, CSA and CE standards
 - Rapid assembly by one person in less than a minute.
 - Easily assembled using pins by just one person (No bolts or tools required)
 - Total assembled weight from just 72 lb (33kg).
 - Load bearing, lockable castors for easy positioning.*
 - Folds down neatly for easy transportation with integral wheeled carrier for portability by one person. 2 handles for carrying with 2 people.
 - Highly compact for stowage and easily fits into a typical service vehicle
 - Height of Lift easily adjusted with additional 7.9 in (200mm) height available
 - Multiple person fall arrest capability.
- * ACOP – Advises no gantry movement under load except where a “competent person” has undertaken a suitable Risk Assessment & Method Statement and deems appropriate.



LIGHTWEIGHT ■ PORTABLE ■ SAFE

Provided by THERN

OSHA
ANSI
CSA
CE

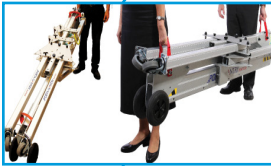
LEEA Membership

ISO 9001

ISO 14001

OHSAS
18001

The Queen's
Award for
Enterprise
Innovation



PORTABILITY

Carry handles and trolley integral to structure.



LOAD TROLLEY

Innovative quick release trolley fitted in seconds.



COMPACT

Frames easily fold onto beam forming, stowable units.



RAPID ATTACHMENTS

Winch option deployed on two bolts. Height adjusted easily by hand.



STOWABILITY

Trolleys easily stow onto folded structure & compact size lends itself to easy storage.



"TRAP" PLATES

Trapezoidal plates and aircraft pins enable rapid, safe deployment without tools.

RAPIDE DESIGN OPTIONS

| Part # | Description |
|---|--|
| PGRS00500CA | A-Frame |
| MATERIAL HANDLING TROLLEY (choose one) | |
| PGTZR00500 (A) | Master Link Trolley used with chain hoist* |
| PGTXR00500 (B) | Closed Coupled Trolley used with chain hoist* |
| | Basic carriers for general use with material handling applications. Closed Coupled Trolley provides additional 4.5" of overhead clearance. |
| PERSONNEL LIFTING CONFIGURATION (man-ride) | |
| PGTUR00500 (C) | Sheave Carrier - Guides wire rope on personnel rated winch. Use in conjunction with winch bracket. - Required |
| RAPG000002 (D) | Winch Bracket - Designed to hold SALA II personnel rated hand winch*. Includes sheave to guide wire rope. - Required |
| Trolley Choice | Select either Master Link Trolley or Closed Coupled Trolley to attach SRL (Self Retracting Lifeline)*. |

* Provided by others.



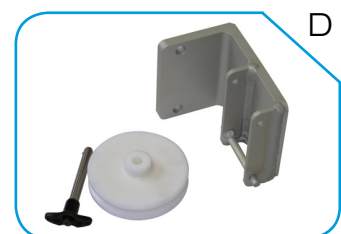
A



B



C



D

