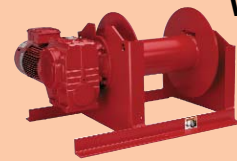


Thern

Product Application

Wastewater

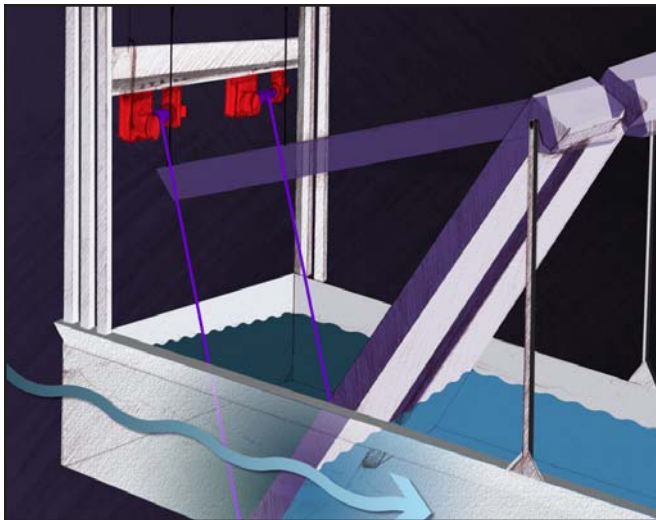


Raising Screens for Cleaning in Wastewater Treatment Plant



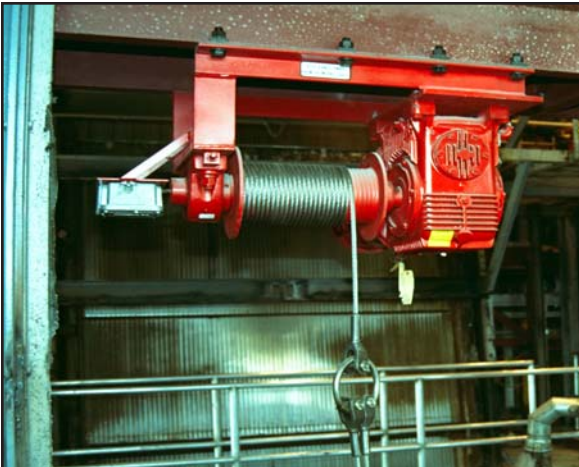
Winches are equipped with special motors suitable for explosive environments.

Below: Winches connect to hinged screens and position them for cleaning.



Modified 4HW Series electric winches are operated as hoists to raise and lower screens for periodic cleaning at a wastewater treatment plant. The screens filter water during the first stage of purification. A secondary tie-off is used to hold the screen in the raised position. The winches are modified with extended grooved drums for single layer operation, and explosion proof motors and limit switches due to the explosive environment.





Winches are mounted upside-down and used as hoists. A total of six winches are installed at this facility.

APPLICATION DETAILS

Lifting or pulling:	Lifting
Line pull required:	5,500 lb
Line speed required:	20-30 fpm, variation acceptable
Travel distance of load:	45 ft at hook, single layer
Power source:	460/3/60
Installation requirements:	Ceiling mounted
Environment:	Explosive
Frequency of operation:	Intermittent

